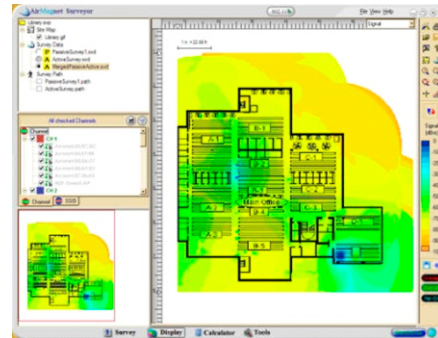


WiFi SURVEY

PROFESSIONAL SERVICES

Post Installation WiFi Survey

Code: PS-SV-POS-01



Overview

Performing a post installation WiFi survey is the ONLY way to prove the initial wireless design meets with your initial requirements. If your wireless network supplier did not perform a post installation verification survey for you then you do not know if you received what you paid for.

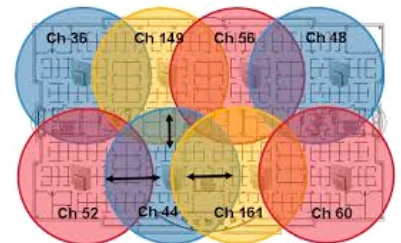
Using a tool survey such as AirMagnet Survey PRO will clearly show you the WiFi coverage of each wireless access point, allowing you to see that wireless coverage has been provided in the areas that you requested.

Benefits in a Post Installation WiFi Survey :

- ▶ Visualize the coverage provided by your wireless network with easy to understand heat maps.
- ▶ Locate holes in coverage (not enough coverage), as well as interference (too much coverage) in your wireless network.
- ▶ A hole in coverage will cause devices to lose connection from the wireless network, and the host application.
- ▶ Interference will cause very slow transactions between the device and the host, as well as disconnects from the wireless network.
- ▶ Resolve problems in your wireless network by adding, removing, or fine tuning access points in your wireless network.

Our Post Installation WiFi Survey process :

- ▶ PT. Autojaya Idetech / PT. Solusi Periferal's Wireless LAN engineer is dispatched to your facility with a WiFi Analysis System capable of interpreting your wireless (RF) signal.
- ▶ The on site engineer scans your facility by walking through it, collecting data and assembling the heat maps outlining the problems in your network.
- ▶ The gathered information is analyzed and recommendations are made.
- ▶ While on site engineer (working with your IT/Networking staff) can make changes to your existing wireless infrastructure to resolve issues IMMEDIATELY.



ACS GROUP

PT. AUTOJAYA IDETECH - www.autojaya.com
PT. SOLUSI PERIFERAL - www.solper.com

Jakarta : Perkantoran Gunung Sahari Permai #C-03, Jl. Gunung Sahari Raya No 60-63, Jakarta 10610 - Phone: +62 21 - 4208221 or 4205488 - Fax: +62 21 - 4207903, 4207904
Cikarang : Cikarang Square Blok E No. 62, Jl. Cikarang - Cibarusah Km. 40, Cikarang Barat - Bekasi - Phone : +62 21 - 29612366, 29612367 - Fax : +62 21 - 29612368
Semarang : Grand Ngaliyan Square, Blok B No.18, Ngaliyan, Semarang 50184 - Phone : +62 24 - 76638092, 76638093 - Fax : +62 24 - 76638096
Surabaya : Komplek Ruko Gateway Blok D-27, Jl. Raya Waru, Sidoarjo 61254 - Phone : +62 31 - 8556277(H), 8556278 - Fax : +62 31 - 8556279
Denpasar : Jl. Gatot Subroto I-XI, No.18, Denpasar, Bali 80239 - Phone : +62 361 - 419284(H) - Fax : +62 361 - 419315