



# Asset Management & Tracking System

BY ACS GROUP

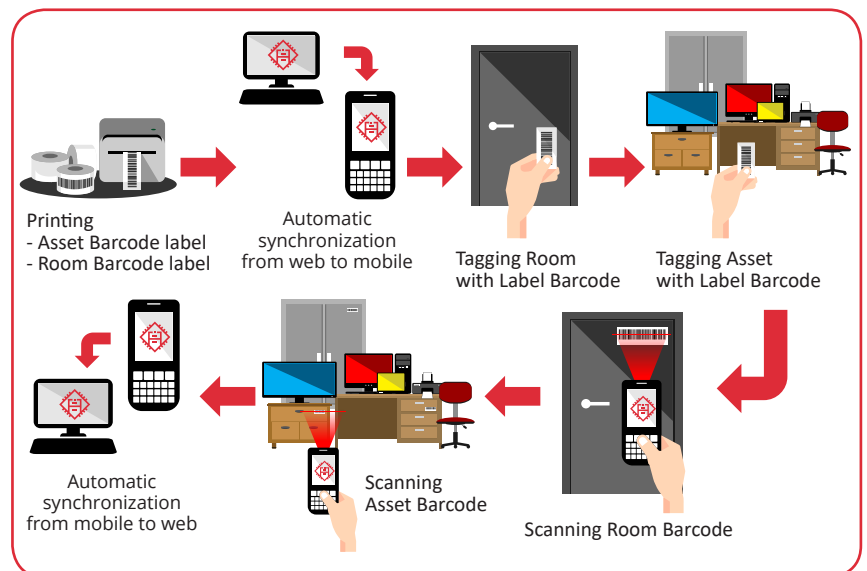
# Enterprise Edition V.6

## HIGHLIGHTS

- On-Cloud option available for you to worry less about server maintenance & periodical upgrade
- Access the web app via browser at desktop / tab / mobile seamlessly (HTML5 web responsive)
- Upload unlimited asset, edit data, add photos, print barcode / QR code label all in one web app
- User License based package with authorization modules
- Generate informative reports / inquiry view to excel, filter only the ones you want to see
- Assign approval PIC to allow transactions (movement, borrow)
- Lend asset without losing track of PIC, and get email notification for borrow overdue
- Schedule maintenance for particular assets
- Android APK mobile application for transaction activities on the field such as opname, movement, asset info update
- Supporting barcode reader & label printer hardware also available

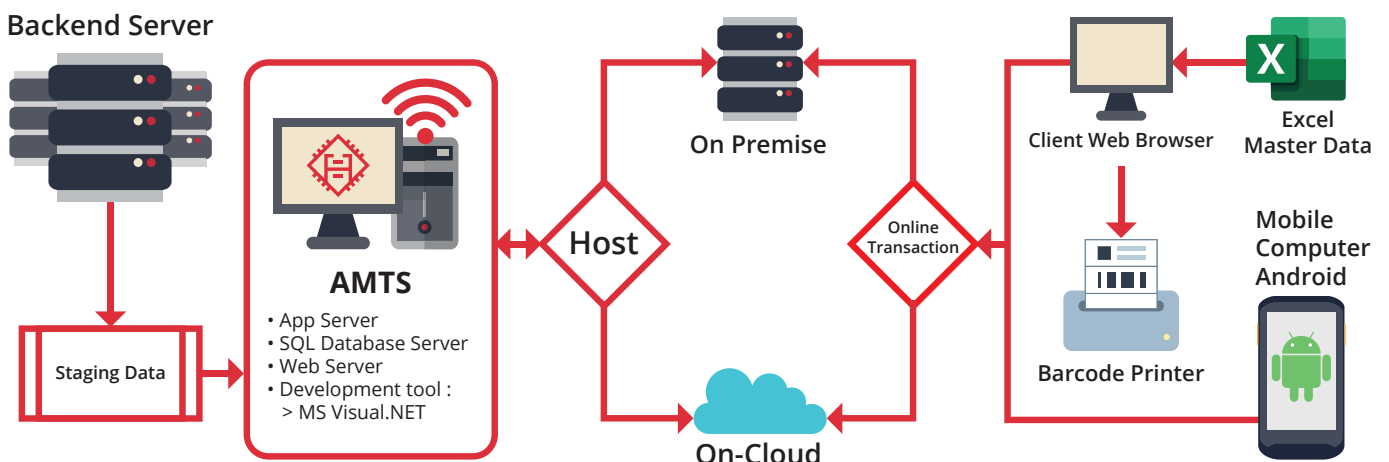
AMTS is specially designed to efficiently track corporation's valuable general-affairs assets such as laptops, computer, furniture, apparatus, and vehicles safely with dependable accuracy. Time wasted locating the asset and the chances of information lost is reduced significantly.

AMTS simplifies the process of registering assets & types of assets, conduct borrow/return and its due date, display historical transaction and schedule periodic maintenance/repair. Asset-related documents such as warranty, user manual, and purchase registration can also be attached in this system.



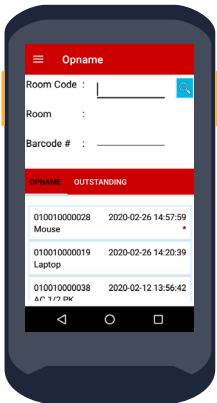
### Share data within your network

AMTS is a multi-user application that allows you to share data and report across your authorized network. On-Cloud option frees you from the need to maintain a physical server infrastructure. AMTS is HTML5-based app with Android OS, built on the Microsoft Infrastructure and uses Microsoft® SQL Server® Database.



**Critical Event Notification Trigger**

Managed by rule setting, enlisted users will get a synchronized instant feedback on asset related events, allowing a better information spread.

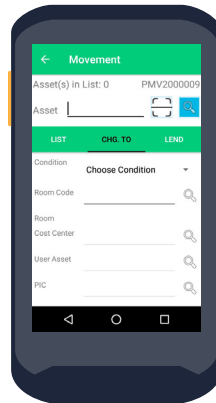


**Eliminate inconsistencies by simple audit & verification**

Ensure asset existence and its respective owners while monitoring everyone who access the application and input changes

**Asset Entry Point**

Clearly defined input template of every traceable asset, it has several pages options of category choices to ensure easy findings each time any user conduct a stock opname.



**Asset Transfer between branches**

Move your assets around without losing track of its whereabouts.

**Asset Component Management**

An asset may consist of several components in which each "sub-assets" need also to be separately tracked. For instances, a PC has a sub consisting of a screen monitor, keyboard, mouse, and printer. Manage and classify sub-assets of a main asset with ease using this module.

**Asset Duplication**

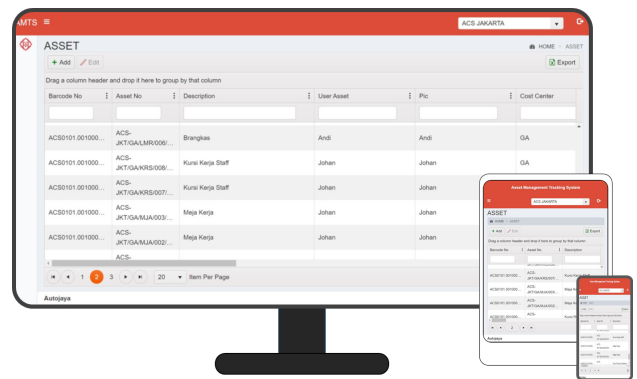
Safe time in entering asset detail that has the same entry with ones already inputted. With this module you can simultaneously add, for instance 25 units of PC with the same features.

**Asset Disposal**

Have a regulated entry of disposal on each asset that are deemed "end-of-life" or no longer needed to be tracked.

**Inquiry Asset List**

Filter report / inquiry data based on sub-branch, location, asset class, cost center, purchase date, etc; adjustable per user



HTML5 web-based



- Supporting Hardware**
- Barcode printer
  - Label and ribbon
  - Mobile computing device



**ACS GROUP**  
 PT. AUTOJAYA IDETECH  
 PT. SOLUSI PERIFERAL  
 www.acsgroup.co.id

**Jakarta (HO)**  
 Perkantoran Gunung Sahari Permai #C03-05  
 Jl. Gunung Sahari Raya No 60-63 Jakarta 10610  
 Telp : +6221-4208221(H), 4205187(H)  
 Fax : +6221-4207903, 4207904, 4205853

**Cikarang**  
 Cikarang Square Blok E No 62,  
 Jl. Raya Cikarang Cibarusah Km 40,  
 Cikarang Barat, Bekasi  
 Telp : +6221.29612366, 29612367  
 Fax : +6221.29612368

**Semarang**  
 Grand Ngaliyan Square Blok B No.18,  
 Ngaliyan 50181, Semarang  
 Telp : +6224.76638092, 76638093  
 Fax : +6224.76638096

**Surabaya**  
 Komplek Ruko Gateway Blok D-27  
 Jl. Raya Waru, Sidoarjo 61254  
 Telp : +6231-8556277(H); 8556278  
 Fax : +6231-8556279

**Denpasar**  
 Ruko Grand Sudirman Agung Blok B No.29,  
 Jl. PB Sudirman, Dauh Puri Kelod,  
 Denpasar Barat, Denpasar - Bali 80114  
 Telp : +62361-4457859  
 Fax : +62361-4746526